

Orion™ for Wireline

- DATA ACQUISITION SYSTEM FOR WIRELINE AND SLICKLINE
- GREASE INJECTION CONTROL OPTION

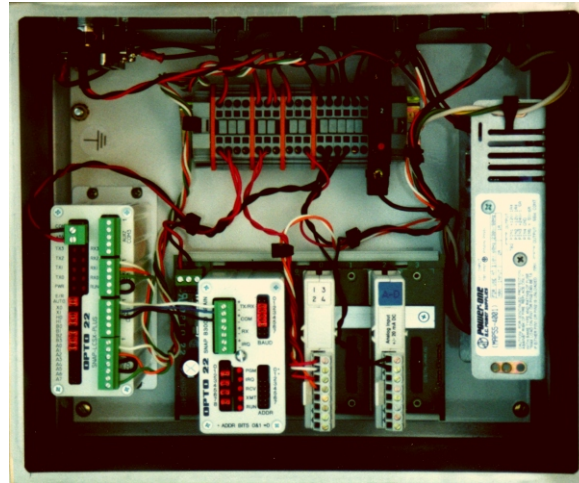
Orion for Wireline is a cost effective data acquisition system for wireline and slickline winch units, typically used to record, monitor, display and report depth, speed, weight, tubing pressure and casing pressure. Other channels may be added as required.

The package is compact, consisting of a 12" x 10" x 6" NEMA 4x stainless steel control box, laptop PC and sensors. A barrier box is available for any sensors which must be at the well head. An optional Electronic Memory Unit (EMU) may be added to the system as backup storage in the event of PC failure or as primary storage if you wish to run the system (blind) without a PC.

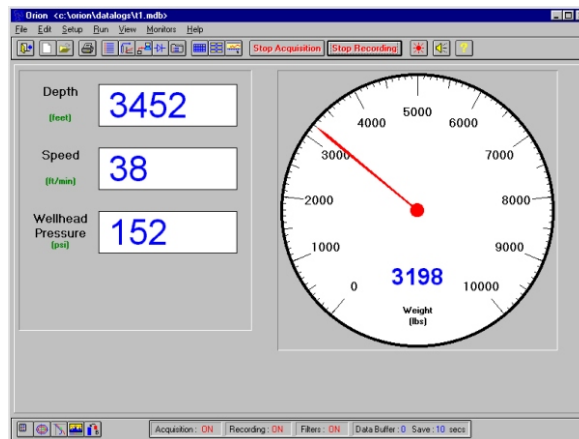
Orion for Wireline can be used in conjunction with the Cerberus™ for Wireline software, which models the forces on the wireline in real-time as the tools are run in and out of the well. Differences between measured and predicted data may indicate incipient problems downhole. An "intelligent monitor" alerts the user to potential problems and areas of the well requiring extra caution such as tubing shoes and restrictions.

When used as a job planning tool, Cerberus for Wireline can answer questions such as:

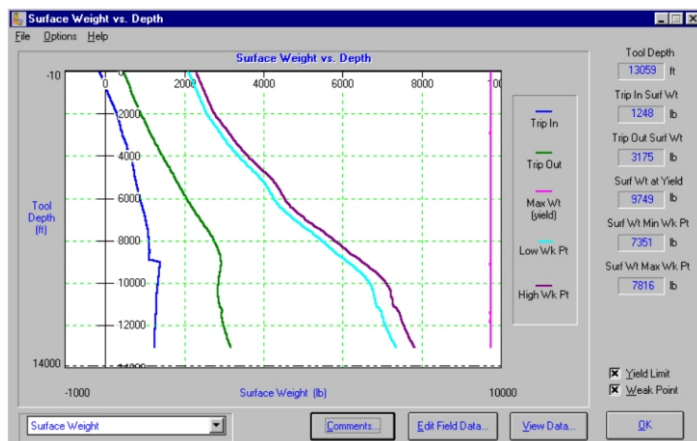
- Will the tools reach TD?
- Which weak point should be used?
- What is the maximum safe pull?
- What is the fluid lift force on the tools?
- How much force will a tractor have to pull to get to bottom?



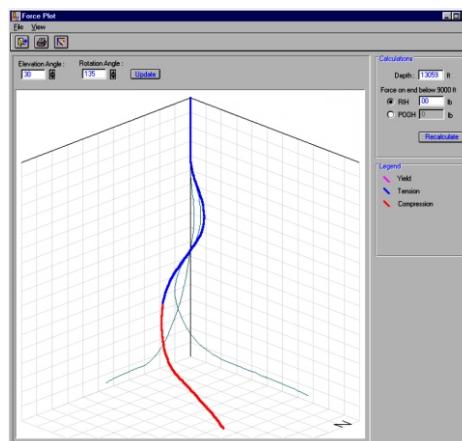
Orion system with cover removed



Wireline data



Surface Weight vs. Depth display



Force Plot display

Orion™ for Wireline

www.nov.com/ctes
ctes@nov.com

7909 Parkwood Circle Drive
 Houston, Texas 77036
 United States
 Phone: 713 375 3700
 Fax: 713 346 7687

9870 Pozos Lane
 Conroe, Texas 77303
 United States
 Phone: 936 521 2200
 Fax: 936 521 2275
 24 Hour Support: 936 521 2200

